

Mitchell Mount



MT-AS-FG-MM-07-0275-UN_02



MT-AS-FG-MM-07-0275-UN_03

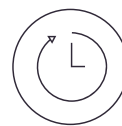
Standard Material	5052 - H32 Aluminum
Standard Finish	51- Anodized Black
Available Finish(es)	20-30 Powder Coated
Weight	With 6" Plate 5.90lbs (2.67kg) With 12" Plate 9.65lbs (4.38kg)
Bolt Hole Size	11/16" (17.46mm)
Recommended Hardware	See ModTruss Connection Guide
Recommended Tools	Tool Kit 1



In Stock



Compatible


 Serialized &
Traceable

 Made To
Order

TR

EX

PL

JH

PA

HG

MO

RG

AC

HW

TK

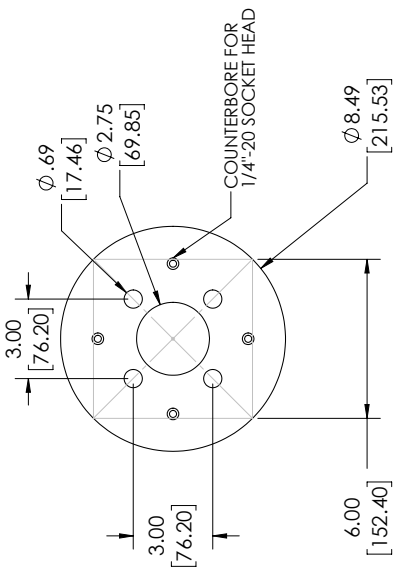
MH

FT

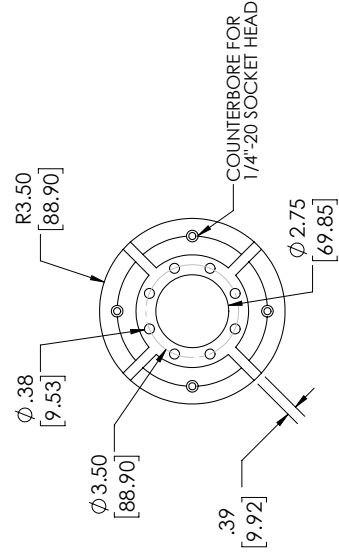
GL

PART NUMBER	DESCRIPTION	QTY.
MT-FG-MM-07-0275-UN_01	MITCHELL MOUNT PLATE	1
MT-FG-MM-07-0275-UN_04	ALUMINUM STANDOFF	4
MT-AS-FG-MM-07-0275-UN_03	12" TRUSS MOUNTING PLATE	1
MT-AS-FG-MM-07-0275-UN_02	6" TRUSS MOUNTING PLATE	1
1/4"-20 X 1.5" FULLY THREADED SOCKET HEAD CAP SCREW	STAINLESS STEEL SOCKET HEAD	8

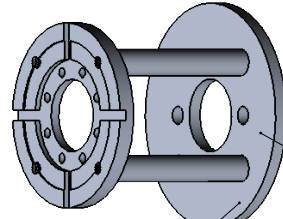
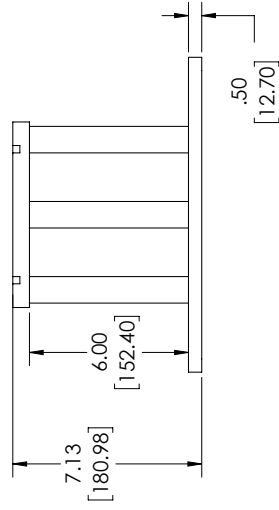
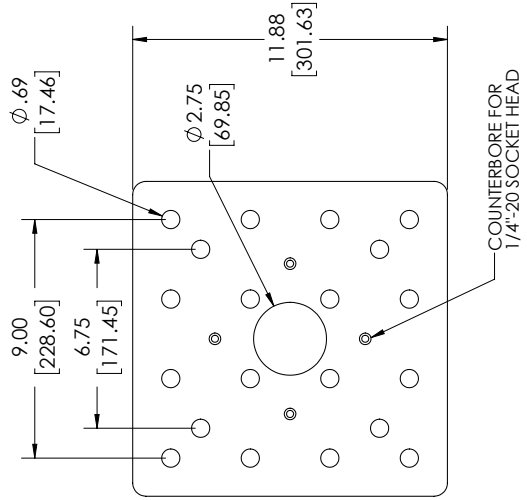
MT-AS-FG-MM-07-0275-UN_02



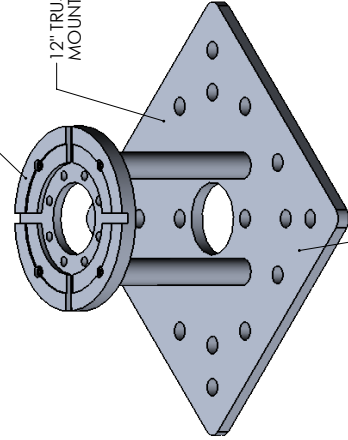
MT-AS-FG-MM-07-0275-UN_01



MT-AS-FG-MM-07-0275-UN_03



MT-FG-MM-07-0275-UN_02



MT-FG-MM-07-0275-UN_03

PRECISION LEVEL - MED - ±0.6 (±0.98)
BRACKET (DIMENSIONS ARE IN MM)

7/22/2024 REVISION: A

DESCRIPTION: TRUSS COMPATIBLE MITCHELL MOUNT

PART NUMBER: MT-AS-FG-MM-07-0275-UN